

DIVISARE

PROJECTS DESIGNERS PHOTOGRAPHERS BOOKS

Q MENU

PARC ARCHITECTES
43 SOCIAL HOUSING IN SAINT-DENIS, FRANCE

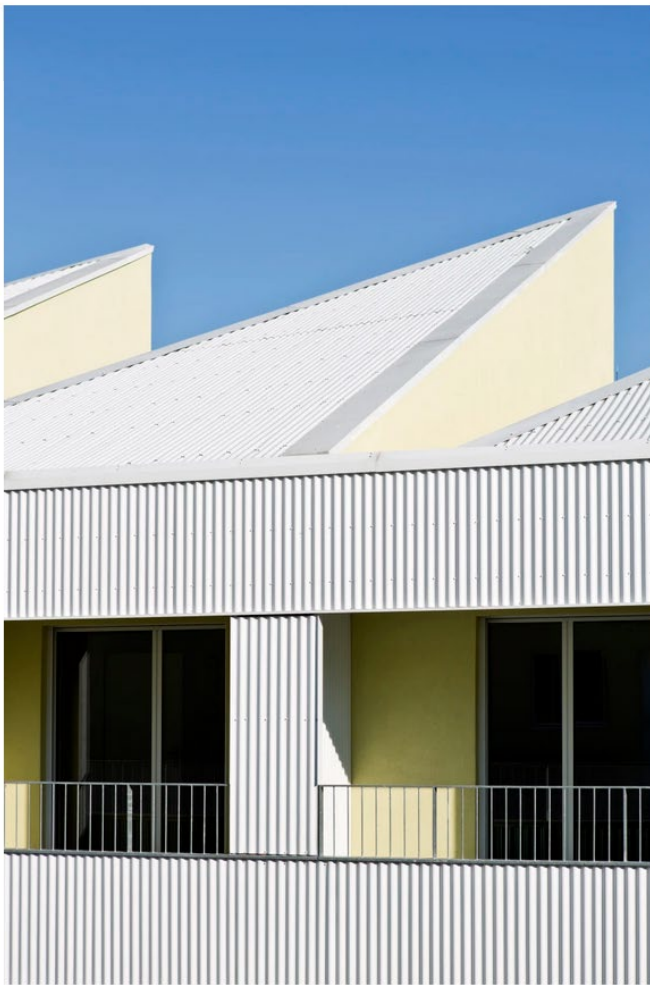
PHOTOS BY THOMAS LANG



© PARC ARCHITECTES

ADD TO COLLECTION

Between the Seine river and the railways, Saint-Denis confluence is a former industrial site. An extensive housing program will replace the former buildings. Reinterpreting both to the barge and the sheds, those two buildings seek to bring more comfort, more surface area and more uses to social housing units, through a systematic double-orientation and the multiplication of outdoor spaces.



© PARC ARCHITECTES

ADD TO COLLECTION

The two buildings multiply outdoor spaces: individual gardens on the ground floor, loggias on the street and the garden, wide outdoor walkways. To eliminate thermal bridges and reduce noise pollution, loggias and walkways are autonomous structures. They are integrated to the volume through an aluminum corrugated skin. Such as bridges on a boat, walkways allow children and parents to walk, meet and play.

PUBLISHED ON MARCH 02, 2016

LOCATION
FRANCE - SAINT-DENIS

DESIGNER
[PARC ARCHITECTES](#)

PROJECT YEAR
2015

PHOTOS BY
[THOMAS LANG](#)

CREDITS

PHOTO
THOMAS LANG

PROJECT FACTS

INFO

- CLIENT GROUPE BRÉMOND
- PROGRAM 43 SOCIAL HOUSING UNITS IN TWO BUILDINGS

DATES

- BUILDING OPENING JUNE 2015

DIMENSIONS

- TOTAL PROJECT SURFACE 3400 M2
- BUILDING COST 3.820.000 €

ATLAS OF ARCHITECTURE

- [APARTMENT BLOCKS](#)
- [DECK ACCESS BLOCKS](#)
- [PUBLIC AND SOCIAL HOUSING](#)

Le courrier de l'architecte

La newsletter
[input type="text"/> OK
Entrez votre e-mail pour vous inscrire

Rechercher
[input type="text"/> OK
 Standard Etudiants

Cahier Spécial - Annuel 2015

ARCHITECTES TYPOLOGIES MATÉRIAUX POINTS DE VUE ALBUMS-PHOTOS CAHIERS SPÉCIAUX DOSSIERS AGENDA

Album-photos | L'année 2015 de PARC Architectes (17-12-2015)

Cette année, PARC Architectes a livré 43 logements sociaux à Saint-Denis en deux petits immeubles à pointes et un boulodrome en bois plié à Saint-Ouen. L'agence a été lauréate d'un concours de crèche de 99 berceaux dans le XXe arrondissement de Paris. Le CRAP Lab a sorti le premier numéro de PRAGMA / Cahier de Recherche en Architecture Pratique. Début 2016, le chantier de reconversion de l'usine MPR débute et l'agence rend un concours de conservatoire à Bourg-en-Bresse et une bibliothèque universitaire à Paris en association avec Barozzi et Veiga.

France | PARC Architectes



43 logements à Saint-Denis

